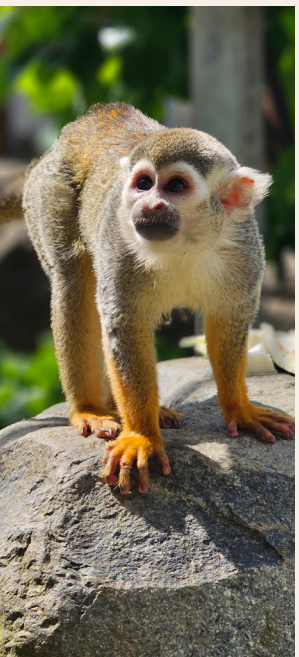




# Zoology & Animal Management

This two-week programme is perfect for future Veterinarians, Zookeepers, Animal Biologists and those with a love and passion for animals. This course provides a superb opportunity for those pupils who wish to work with animals, wild or domestic, or who wish to have something unusual to sit alongside their scientific qualifications. Students will be able to move on to study veterinary medicine, veterinary nursing, zoology, conservation – and many other courses not directly connected with animals.



## PROGRAMME INTRODUCTION

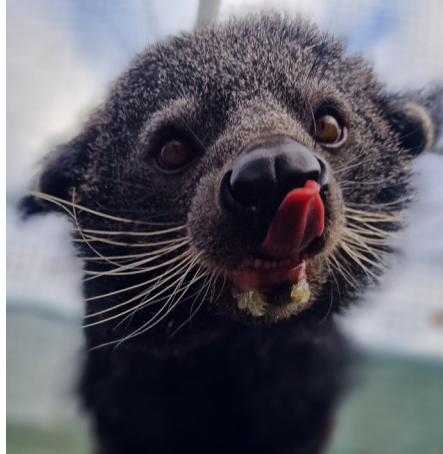
Bede's Summer School is delighted to be offering this hands-on, immersive course with unprecedented access to Bede's Zoo under the expert tutelage of our Zoo Managers and Zoologists. Combining Animal Management and Zoology workshops with practical sessions in Bede's Zoo in the morning, this programme is enhanced by a Research Project in the afternoons, which enables students to improve their general English language skills, practise communication and build confidence in public speaking.

## BEDE'S ZOO

Situated at Bede's Senior School, Dicker, the Zoo is home to about 70 different species of mammals, birds, amphibians, reptiles, fish and invertebrates. Catering for their individual enrichment needs can be quite a challenge as each animal has different requirements, as a snake isn't going to need the same enrichment as a Squirrel Monkey. As a school, we are enormously lucky to have such a facility in our portfolio. In animal management, students look after a range of zoo animals, and help with the dormouse breeding programme to increase numbers in the wild.



 <b>LOCATION</b>	Dicker
 <b>AGES</b>	14–17 years
 <b>DATES</b>	13–26 July 2025
 <b>TUITION</b>	18 hours per week
 <b>MINIMUM LEVEL</b>	B1
 <b>MAX CLASS SIZE</b>	14
 <b>BEDS PER ROOM</b>	1–4 beds
 <b>STAFF:STUDENT RATIO</b>	1:5
 <b>SPECIALITY</b>	Zoology & Animal Management



## ENGLISH LEVELS

We accept levels from B1 (Intermediate) to C2 (Proficiency). We cannot accept Complete Beginners or Beginners on this course. Students whose mother tongue is English are welcome on this course.

## ANIMAL HUSBANDRY

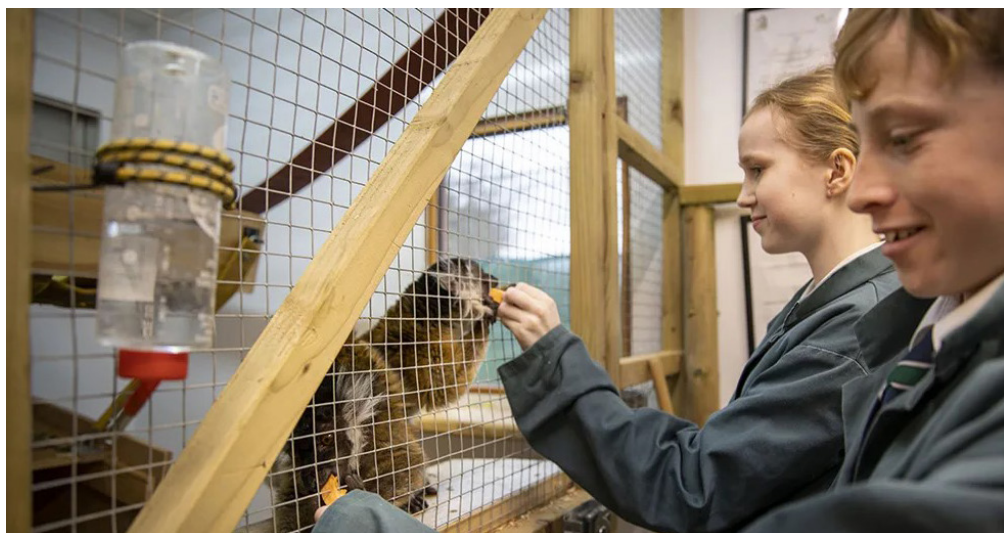
Students learn about animal welfare and ethics, animal health and disease, animal behaviour, practical animal husbandry and work experience in the land-based sector.

## ANIMAL CARE & BEHAVIOUR

We feel that a connection with animals is enriching, calming and fulfilling. Feeding mealworms to a gecko, trying to exercise a kinkajou, or listening to the calls of our primates – brings something to the lives of the young people who are privileged to be able to enjoy these opportunities.

## ANIMAL HANDLING

Students look at wildlife conservation, both in captivity and in the wild, the ethics of keeping animals in captivity, how to health check their pets, and perhaps most enjoyably – take part in animal handling and feeding sessions, e.g. they are able to spend time feeding the white faced owl, cleaning out the Royal Pythons' vivarium, or rearranging the branching in the home of the Siberian Chipmunks.



## RESEARCH PROJECT

Working in small groups, students complete daily research tasks based around their chosen topic of interest and linked to a species they have learned about. They then present their findings and conclusions within the class on the last day of the course.

## ZOO VISITS

The programme also enables students to look beyond our own school campus. Students will get the opportunity to visit at least two Zoos locally in the duration of their course, where they will have the opportunity to take part in talks and get a unique behind the scenes access on visits.

## EXCURSIONS

Zoology & Animal Management students will join Dicker's English Plus students on full-day excursions at the weekend for the exciting, cultural and historic adventures to destinations and attractions around London and the South of England.

## TYPICAL DAY

Zoology and Animal Management students will receive 18 hours of tuition per week. Specialist topics include animal welfare and ethics, practical animal husbandry, animal behaviour, animal classification and conservation.

**09.00 ANIMAL HUSBANDRY**

**10.15 ANIMAL CARE & BEHAVIOUR**

**11.30 ANIMAL HANDLING**

**13.30 RESEARCH PROJECT**



To find out what animals are kept at Bede's Zoo, please visit Bede's Zoo Official Guidebook.